

E-SHIFT 3R



XAP TECHNOLOGY WORLD LEADER IN ELECTRO-MAGNETIC ACTUATORS FOR SEQUENTIAL GEARBOXES

XAP Technology, once again, redefines the future of gearshift system. After the linear actuator, XAP has designed a **rotary actuator**.

The new E-Shift3-R is an electrical actuator that can control most sequential gearboxes.

The E-Shift3-R is a **one-piece unit**, easy to use and easy to install. It's a solution that doesn't require any external elements: pumps, accumulators, electrovalves, hoses, filters, fluids, etc. It can even take place on top of barrel. Plus, his power consumption is low.

Like all the XAP E-Shift, the **E-Shift3-R** can be controlled by CAN or directly by digital inputs. The E-SHIFT 3R is really an innovative product. Never seen something like this before, having more than 16 Nm in a such dimension and weight. The XAP knowledge in actuator systems management will ensure a high degree of performance and guarantee an optimum fit.

Our electromagnetic actuator technology, with permanent magnets, is already used over than 600 competition vehicles worldwide. The production program allows us to offer a wide range of products at reasonable prices.

With the latest revision of the software, electronic board, and design, XAP is extending its product line in order to respond to its customers' needs and the emergence of applications.

HIGH PERFORMANCE ELECTROMAGNETIC ACTUATORS

MOVING MAGNET TECHNOLOGY

MAGNETIC SPRING

HIGH ROTATION FORCE

TWO TRACKS ANGLE AVAILABLE 40°&45°

PROGRESSIVE PUSH MODE

HIGH RELIABILITY

CONTACTLESS POSITION SENSOR

AVERAGE SHIFTING TIME OF 35 MS

LOW MAINTENANCE

MILITARY CONNECTORS

ISOLATED POWER AND CAN

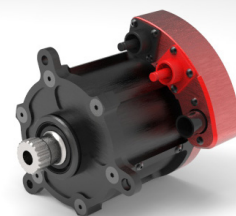
WEIGHT GAIN

SPACE-SAVING

DIRECTLY COUPLED TO THE BARREL FOR OPTIMAL EFFICIENCY

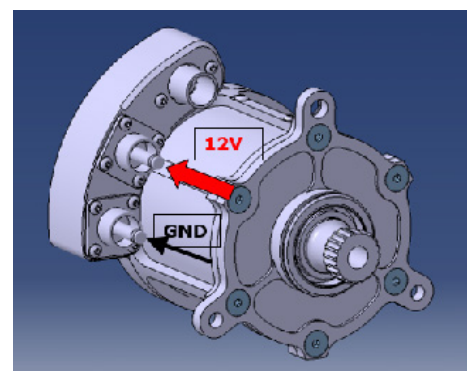
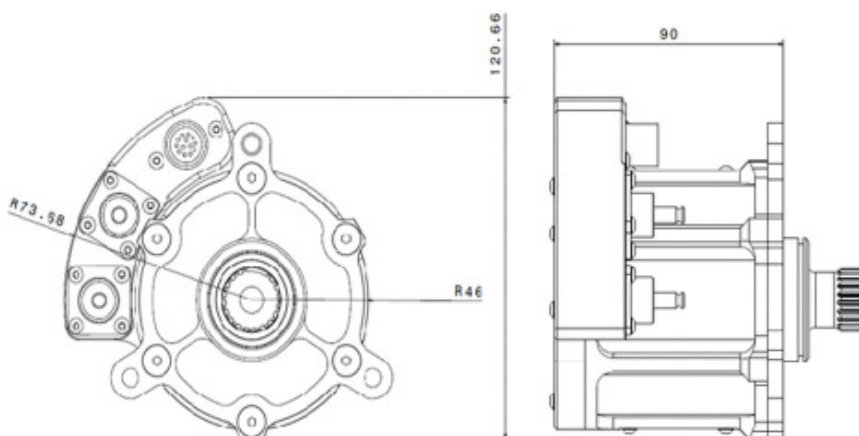
MOVE ON TO THE NEXT GEAR ...





GEARBOX ACTUATOR : E-SHIFT3-R

DIMENSIONS



Weight : 2.46 Kg

TECHNICAL SPECIFICATIONS

Permanent magnet technology

Typical shifting time of 35 ms

Stroke: 45° or 40°

Maximum load of 16 N.m

Diagnostic information sent over CAN

Contactless position sensor

Isolated Power and logic board

Operating temperature range from -10°C to +100°C

IP67 protection

INPUTS / OUTPUTS

12 V and ground, controls, CAN line on 8STA 6 10-35 SN connector

Power supply from 8V to 17V, 140 A max

Power and ground quick release connector

COMMUNICATIONS

CAN connections up to 1 Mbit (Rev 2.0B) : 1

REFERENCES

PF0681-A: EShift 3R 45°

PF0845-A: Eshift 3R 40°