

1 Dashboard's power on

When the car is electrically powered on, the XAP logo appears for two seconds.

Warning : If the ignition switch is on, the logo won't appear. This, in order not to lose time if micro-cuts occurs while the car is running.



2 Setup screen

A special screen will allow you to setup the RPM Leds.

Access to this screen is allowed by pulling and releasing at the same time both dash's switches while the XAP logo are on the screen (duration 2 seconds).

This screen allows you to set up each led one by one, the RPM light on and the RPM light off values.

The adjustment of the RPM (shift) light ON and RPM (shift) light OFF values, is made by moving the throttle sensor (Throttle pedal) while the left dash's switch is pulled.

When the correct value is displayed, you validate it by releasing the left dash's switch.

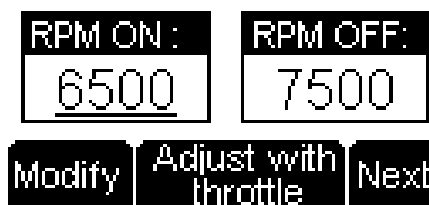
Pulling the right dash's switch makes you change of parameter (RPM ON to RPM OFF) or changing of led.

The illuminated led is the one concerned by the setting of RPM ON and RPM OFF.

When all the leds are set up, the following screen allows to verify if the setup is correct.

Then the RPM is simulated by moving the throttle sensor from 3000 rpm to 8000rpm

To escape from this setup you have to pull the right dash's switch once.



3 Normal mode screens

In a normal use, there are six different screens :

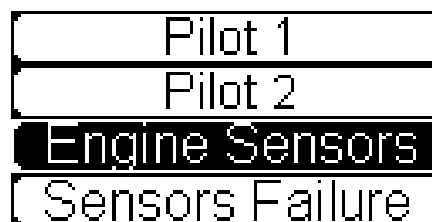
- The pilot 1 screen
- The pilot 2 screen
- The engine sensors screen
- The sensors failure screen
- The logger screen
- The alert screen

You can select any screen from the main scrolling menu, which appears as soon as you use one of the dash switches (right or left).

The two dash switches allow selection of the 6 different screens.

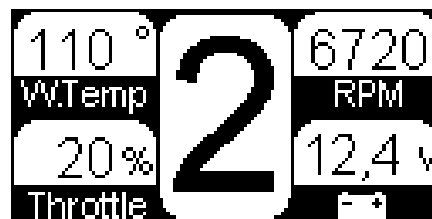
Validate the screen by pulling both dash switches at the same time.

If the ignition is switched on (race mode), the scrolling menu won't appear. So, as the car is running, you only have access to 2 screens : Pilot 1 and Pilot 2.



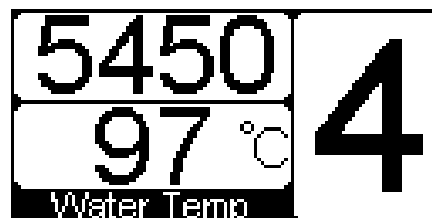
3.1 Pilot 1 Screen

The pilot 1 screen always shows necessary information for the pilot and the engine : RPM, gear number, water temperature, throttle position and battery voltage.



3.2 Pilot 2 Screen

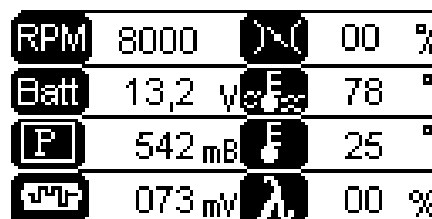
The pilot mode screen shows 3 main informations for the pilot : RPM, gear number, water temperature.



3.3 Engine Sensors Screen

This real-time display shows all the engine's sensor values :

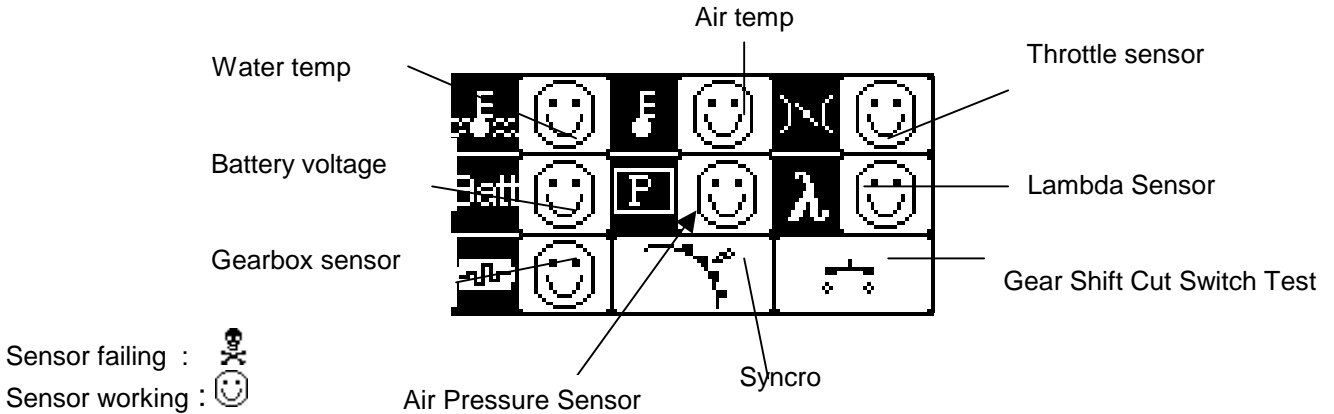
- | | |
|-----------------------|-------------------|
| RPM | Throttle |
| Battery voltage | Water temperature |
| Manifold air pressure | Air temperature |
| Gearbox Sensor | Lambda sensor |



3.4 Sensors Failures Screen

This real-time screen presents the status of the engine's sensors.

If the sensors are functioning normally the "smiley" symbols appears, if not the skull and cross bones shows that the sensor is failed.



3.5 Logger Screen

The following data is always recorded in the dashboard's safe memory :

- RPM Max
- RPM Max in Max gear used
- Min and Max battery voltage value
- Min and Max water temperature value
- Min and Max air temperature value

RPM Max	7400	
RPM Max	6400	Gear 5
Batt Min	12.8	13.2 Max
WaterMin	77	87 Max
Air Min	19	25 Max

The data's recording starts when the engine RPM is over 2000 rpm, and automatically stops when the RPM is under 2000 rpm.

The previous data is erased when the engine reaches 4000 RPM after a dash reset with the ignition switch OFF (when the XAP logo appears).

3.6 Alert Screen

This screen resumes the different types of alerts which could occur.

The number shows the time where the alert was active from 0 up to 20 seconds.

The previous datas are erased when the engine reaches 4000 rpm after a dash reset with the ignition switch OFF (when the XAP logo appears).

Poil Pressure	00 s
Water Temp	00 s
Battery	12.0 s

4 Contrast adjusting

The contrast adjusting can be reached at any time :

- Pulling simultaneously on both dash's switches.
- When contrast adjust screen appears, the contrast increases with the right dash's switch, and decreases with the left one.
- Pulling simultaneously on both dash's switches to exit.



5 Warning screens

The dashboard automatically goes to different warning screens if :

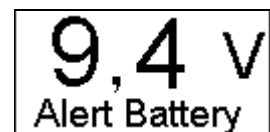
Oil pressure sensor falls to ground



If Wtemp > 100°C if RPM > 1000 RPM



if Vbatt < 11V if RPM > 400 RPM



The pilot has to pull one of the two dash's switches to escape from a warning screen and come back to the previous screen.

As the warning is true, the Warning Leds flashes.