

1. DashBoard Switch On

When the dashboard is switched on, the Citroën Sport Logo appears during 2 seconds.

Remark : When RPM is more than 0 and the throttle position exceeds 25%, the logo screen does not appear, and the dashboard shows the last screen used. This allows not to loose time when power supply glitches occur.



2. Set-Up Menu

Special screens allow access to the dashboard setup. Access to these screens is gained by pressing the two black buttons when the unit is first turned on. A scrolling menu shows the possible options:

Pressing the "+" button allows to move the cursor on the right. Pressing the "-" button allows to move the cursor on the left. To access a menu, press the «Valid» button (the green one).

Press the «Escape» button (the red one) to exit this mode.

To modify Speed parameters

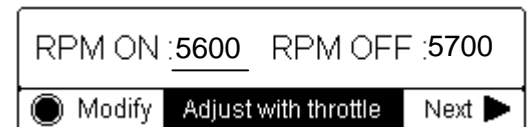


2.1 Leds Setting

With this screen you can alter the RPM of the Gear Change Leds. The first RPM is the one where the led will light (RPM ON), and the second is the RPM where it will extinguish (RPM OFF). Pressing the "+" button and "-" button selects between RPM ON, RPM OFF for the green led and the red led. When selected the LED lights on.



You can modify the values RPM ON and RPM OFF by pressing simultaneously on the 2 buttons «Green» and "+" to increase, "Green" and "-" to decrease. When the correct value appears, you only have to release the «Green» button.



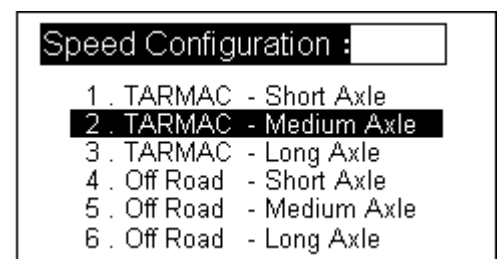
This screen appears when all the values have been set. The RPM can be simulated with the buttons «Green» and "+" to increase and «Green» & "-" to decrease. The Gear Change Lights will illuminate as if the engine were running. To exit this screen, you have to press the «Red» button one time and release. The new values will be available after a dashboard reset.

2.2 Speed Setting

The speed changes in conjunction with the the desired configuration :

6 configurations are allowed :
Tarmac/short axle (périm=1.98/ axle = 59/14)
Asphalte/medium axle (périm=1.98/ axle = 56/13)
Asphalte/long axle (périm=1.98/ axle = 55/14)

OffRoad/ short axle (périm=2.02/ axle = 59/14)
OffRoad/ medium axle (périm=2.02/ axle = 56/13)
OffRoad/ long axle (périm=2.02/ axle = 55/14)



To select the right configuration, you have to select it with the (+/-) switches, and quit the screen with the Escape switch.

2.3 Alerts settings

With this screen you can set the level for alarms on critical sensors of the dashboard. If the RPM is lower of the RPM Min value, no warning will be available.

Different levels can be selected with the buttons «+» and «-». The selected value will change of color.

To alter the value you have to press one time on the «Green» button and release.

To exit this screen, you have to press the «Red» button (red one) one time and release.

The new values will be recorded after a dashboard reset.

	Min	1500		
	Min	1	Max	11 1
	Min	30	Max	106 1
	Min	11	Max	15 1
	Min	1.5	Max	6 1
	Min	30	Max	129 1
	Min	30	Max	129 1
	Min	1	Max	11 0

3. General Menu

In standard use, the pilot have 2 screens he can select pressing the Escape (Red) switch.

3.1 Race Screen

Note : the reset of the fuel consumption is made by pressing the Valid (Green) switch more than 2 seconds.

3.2 Diagnostic Screen

RPM	7800		
Oil P°	5.4	89	
Water T°	4.3	78	
GB Oil P°	4.0	14.1	
Fuel P°	VBatt	152	Speed
			Conso 14.1 l

3.3 Contrast Adjustment

The Dashboard has its own automatic contrast adjust program.

When the contrast has been set manually, the automatic adjustment is disabled to the next reset.

5750		
RPM		
4.1	72	2
GB Oil P°	GB Oil T°	Gear
4.5	72	100
Oil P°	Oil T°	Throttle
97	24	1023
Water T°	Air T°	Atm P°
4.1	4.58	12.7
Fuel P°	Conso	VBatt

3.4 Alert Mode

As the Oil Pressure Alert is more important than the others, it has a specific alert screen.:

It blinks at 3Hz as the external alert LED.

The screen will alternate with the last active screen as long as the alert remains. The pilot can prevent the apparition of this screen by pressing the Red and Green switches together.

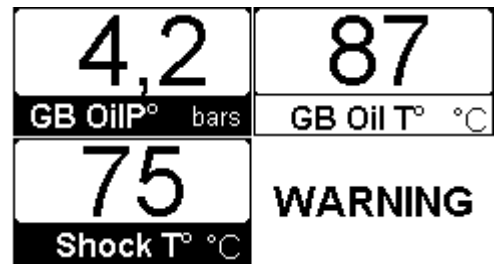
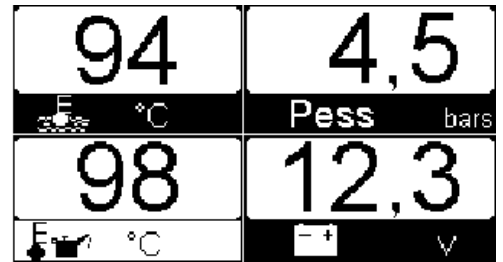
In the case of any other alert, the following screens are shown and the alert's icon is blinking. Other leds are not affected. They are alternating with the last active screen every 3 seconds.

3,2 Bars
ALARM
OIL PRESSURE

The pilot have to press the Red and Green button together to acquit the alert and return to the last screen.

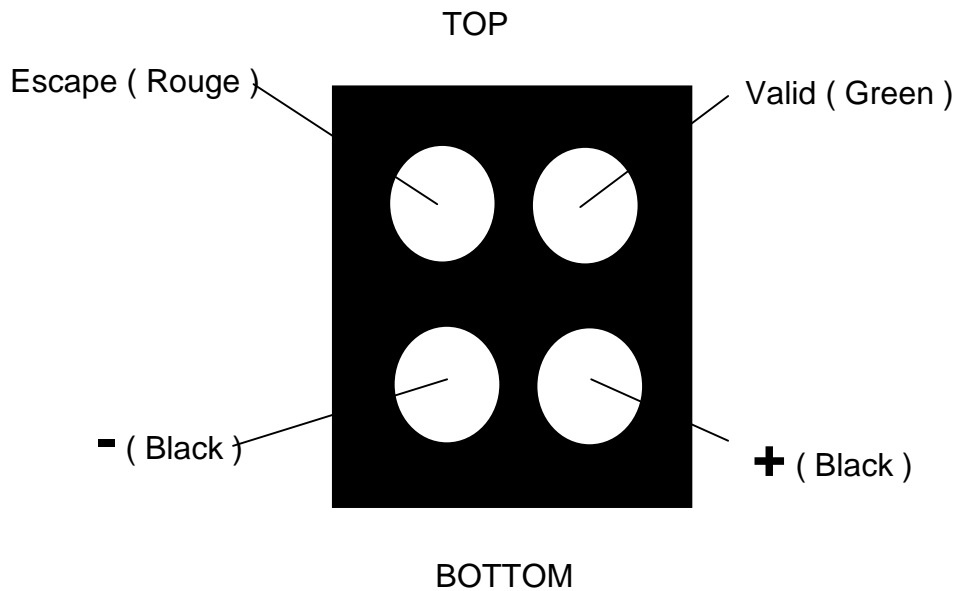
Every time the alert is activated, the leds are blinking quickly.:

- 1st LED : OilP alert still active
- 2nd LED : WaterT alert still active
- 3rd LED : FuelP alert still active
- 4th LED : VBatt alert still active
- 5th LED : OilT alert still active
- 6th LED : GearBox OilT alert still active
- 7th LED : GearBox OilP alert still active



4. Command plate

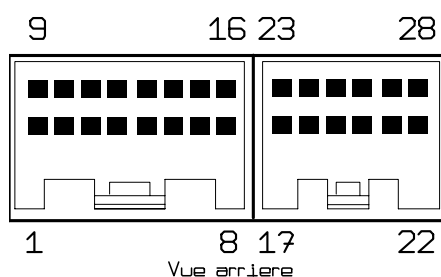
- Switch 0 : Green Switch : Valid
- Switch 1 : Red Switch : Escape
- Switch 2 : Black Switch : (-)
- Switch 3 : Black Switch : (+)



Dashboard Pin Out

AMP/ Multilock Connector 16 & 12pts serie

Pin	Name	Type	Level
1	Ground	Input	0V
2	Analogue 5V	Output	5 V, max 200 mA
3	N/A	Input	Hall sensor, intern pull-up
4	N/A	Input	0-5V sensor/NTC
5	Day/Night	Input	0-12V
6	N/A	Input	0-5V sensor/NTC
7	RX-232	Input	RS232
8	CAN -	Input/ Output	CAN/AI
9	Analogue & RS232 Ground	Input	0V
10	12 V	Input	8 - 19 V
11	N/A	Input	Intern pull-up
12	GB Oil Pressure	Input	0-5V sensor/NTC
13	GB Oil Temperature	Input	0-5V sensor/NTC
14	N/A	Input	0-5V sensor/NTC
15	TX-232	Output	RS232
16	CAN +	Input/ Output	CAN
17	Peripheral ground	Output	0V
18	Button 0	Input	Pull to ground, intern pull-up
19	Button 1	Input	Pull to ground, intern pull-up
20	Display A	Output	Pull to ground, intern pull-up
21	Display B	Output	Pull to ground, intern pull-up
22	Display C	Output	Pull to ground, intern pull-up
23	Peripheral 12V	Output	12 V, 500 mA max
24	Button 2	Input	Pull to ground, intern pull-up
25	Button 3	Input	Pull to ground, intern pull-up
26	RPM Green Light	Output	Pulled down by the dash
27	Warning Red Light	Output	Pulled down by the dash
28	RPM Red Light	Output	Pulled down by the dash



- XAP – Le Mercure Bat A- 1740 Ave Maréchal Juin – 30 000 Nimes - France –
 - Tél : (33) 04 66 02 94 94 - Fax : (33) 04 66 02 94 90 – Email : info@xap.fr -
 - SARL 78 000€ - RCS : Nimes B 408 338 762 - TVA Intra : FR00 408 338 762 -