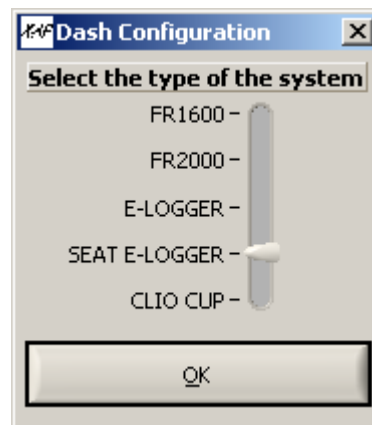


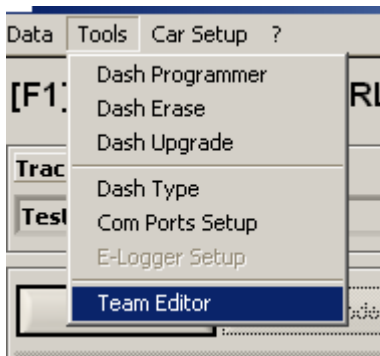
1. Configure the type of the logger



The choice of the type of logger is the first step of the configuration.

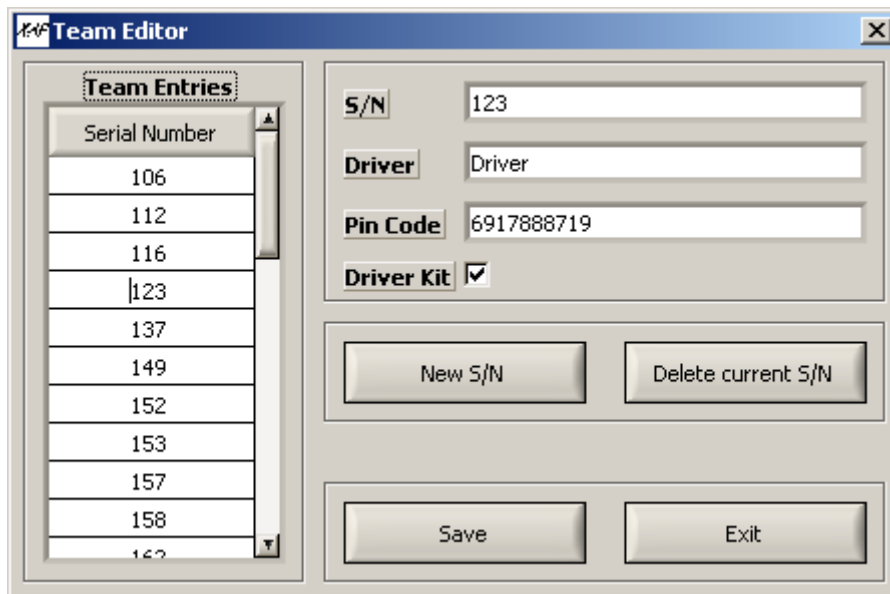


2. Configure your team



Click on the menu Tools\Team Editor.

Now you have to enter the serial number of each of your dashboards, the name of their drivers, and the pincode associated with the serial number (given by XAP). If for a dashboard you got the “**Driver kit**” option, you have to click the corresponding checkbox.



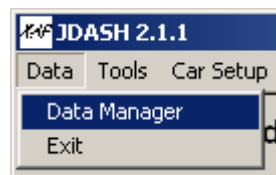
To enter more Serial Number, click on **New S/N**.

If you want to modify an entry, double-click in the table **Team Entries** on the left on the number you want to set, then click on **Save**.

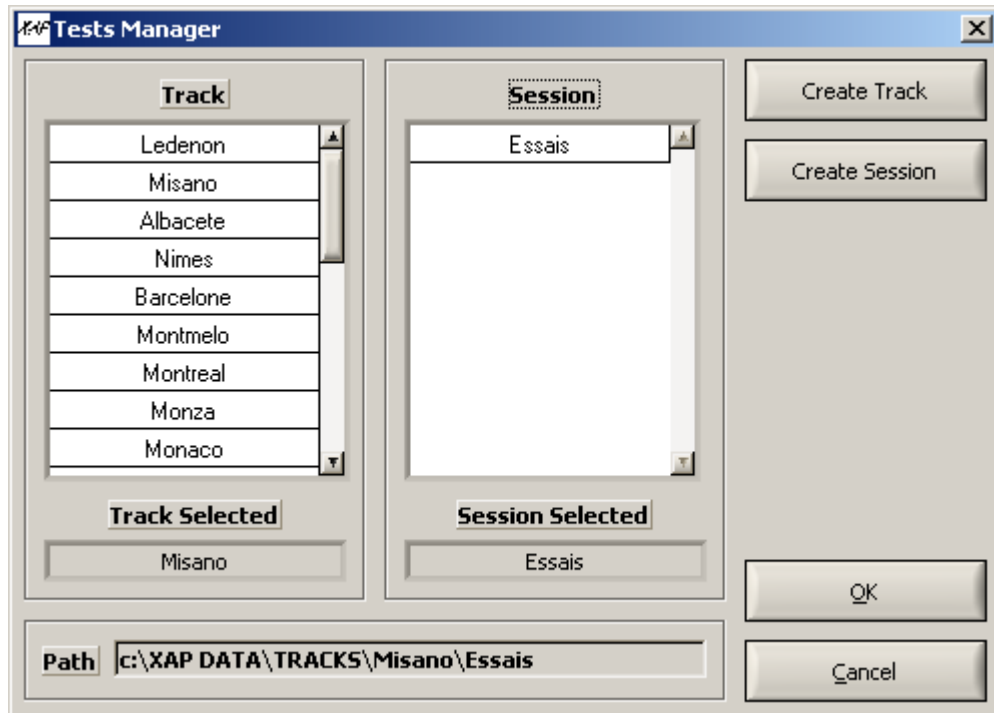
When you're done, click on **Exit**.

3. Set the path for your data

Click now on Data\Data Manager to raise up the window that will let you choose where you want to save the data you plan to download.

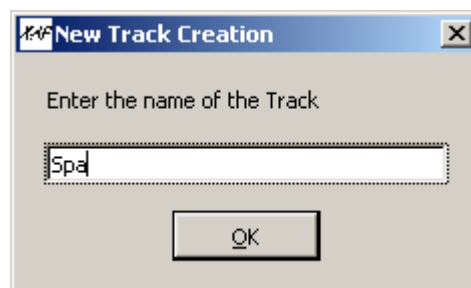


Tracks and Sessions are actually directories in the parent directory TRACKS.



The first time you use the software there will be no tracks nor sessions created.

First you have to create a track using the Create Track button :



Enter the name of the current track and press Enter, or click OK.

Now create a **session** using the **Create Session** button. This **session** will become a directory under the track you just created.

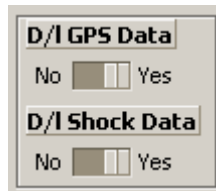
You can create as many **sessions** as you want for a given track. To select a **session** for download, double-click on it in the table on the right.

The current download **path** should now appear in the bottom of this window. If it's right, click on the **OK** button. If not, double-click on the corresponding table to choose a track and its associated session.

4. Choose your download options

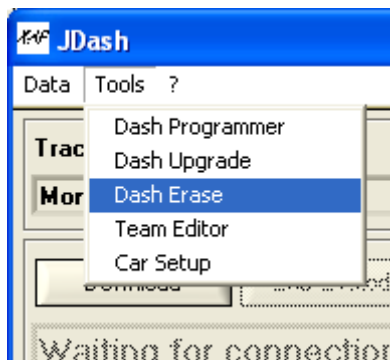
If the car is equipped with the GPS option, you may want to download the GPS data from the dashboard.

Use the **D/I GPS Data** toggle to specify this :

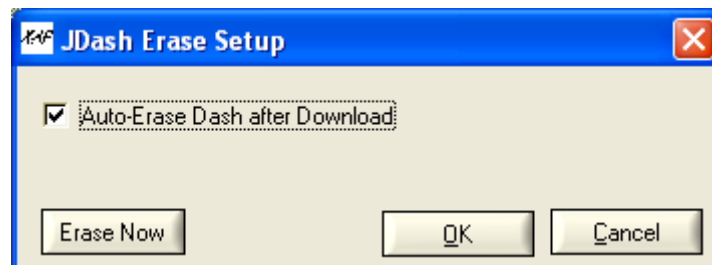


In the same way, if you have a E-Logger with shock sensors, you can use the second toggle to specify whether you want to download the shocks data or not.

If you want all data to be erased from the dashboard after the download, click **Tools\Dash Erase** :



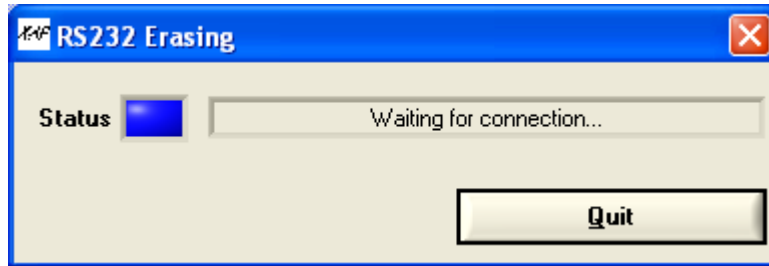
And click the checkbox **Auto-Erase after Download**, then OK.



An orange led should now appear on the download interface :



Be careful with the **Erase Now** button : it will erase all data on your dashboard. If you're sure that it's you've planned to do, click it and the erase window will appear :

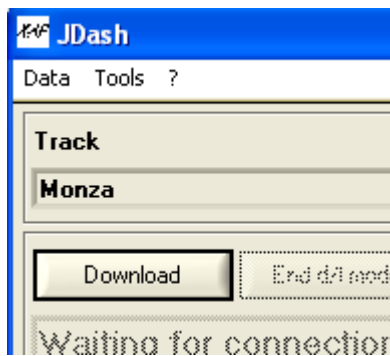


When you connect the dash to the serial port, the led will turn to white, and indicate **Erase in Progress**. When finished, it indicate **Erasing Complete**. Click on **Quit** to leave this interface.

5. Download

You're now ready to download.

Click the **Download** button.



The download operation will begin as soon as you will connect the dashboard the serial port of your computer.

The color of the led will indicate :



Blue : waiting for the connection
Green : everything OK during download
Orange : Communication problem on the serial port.
Red : Transfer Error.
White : Erasing data (if the **Auto-Erase** option is activated).
Blinking Blue/Green : Please disconnect the dash.

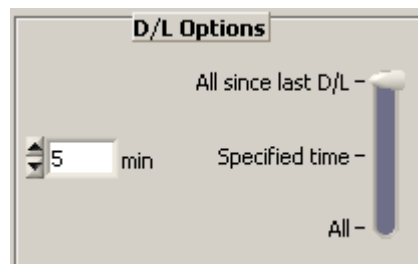
The blinking led allows you to disconnect the dashboard, when the download is over.

You can immediately connect another dash to download its data with the same parameters/options.

When you've finished, you can close the application, and begin to analyze your data with E-Race software.

6. Specific Commands

D/L Options



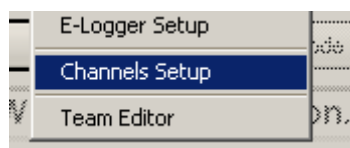
This tool appears only with the circle-memory loggers configurations. It allows to set the amount of time that will be downloaded.

The first option will download all data since the last download.

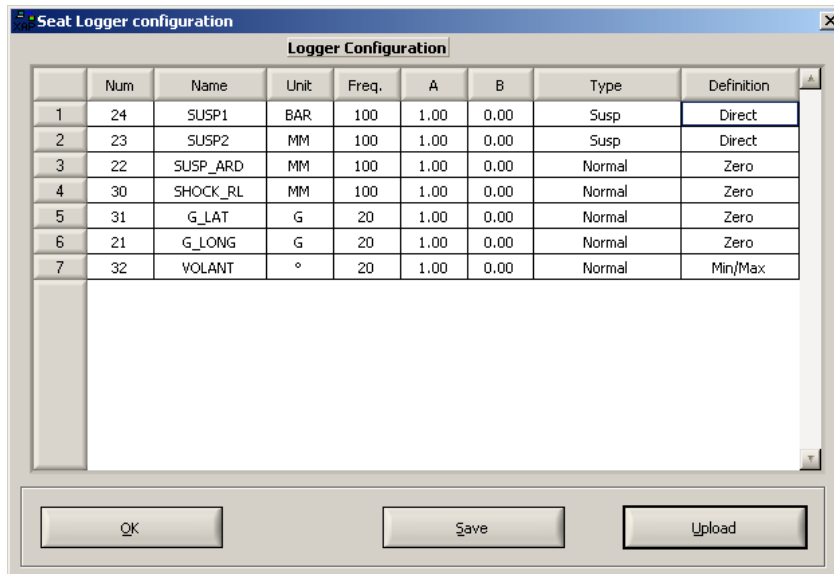
Setting 3 min will download the last 3 min of data recorded by the logger.

“All” will download the entire memory of the logger. It's very long.

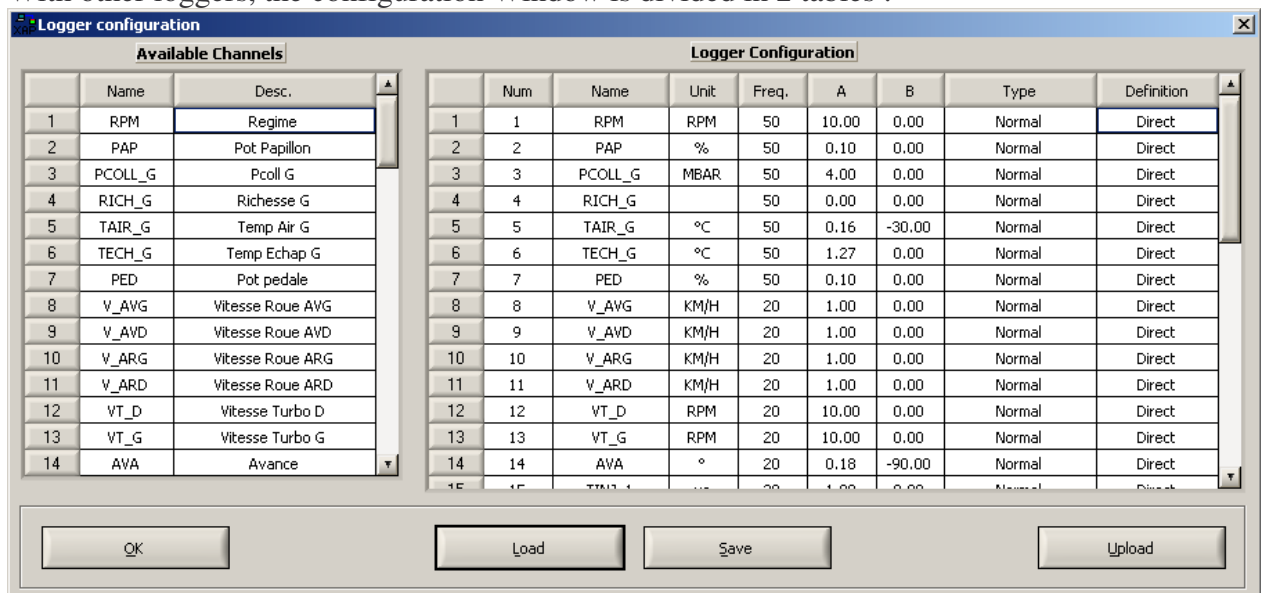
Channels Setup



Tools\Channels Setup : With the SEAT logger, you set the parameters of the 7 optional sensors. You can set all values except the logging frequency.



With other loggers, the configuration Window is divided in 2 tables :



All available channels are on the left. To add a channel to the current configuration, just drag and drop it on the second table.

Using the *Save* button, you can store different logger configurations on your computer. These configurations are saved in the *configuser.xml* file.

Please note that configuration has sometimes to be re-uploaded after each erasing of the logger data.

To access channels properties, you have to double-click on the corresponding line of the table.

The screenshot shows a 'Channel Config' dialog box with the following fields and values:

- Number: 30
- User Name: SHOCK_RL
- Unit: MM
- A: 1.0000000000
- B: 0.0000000000
- Linear:
- Frequency: 100
- Definition: Zero
- Type: Normal

Buttons: OK, Cancel

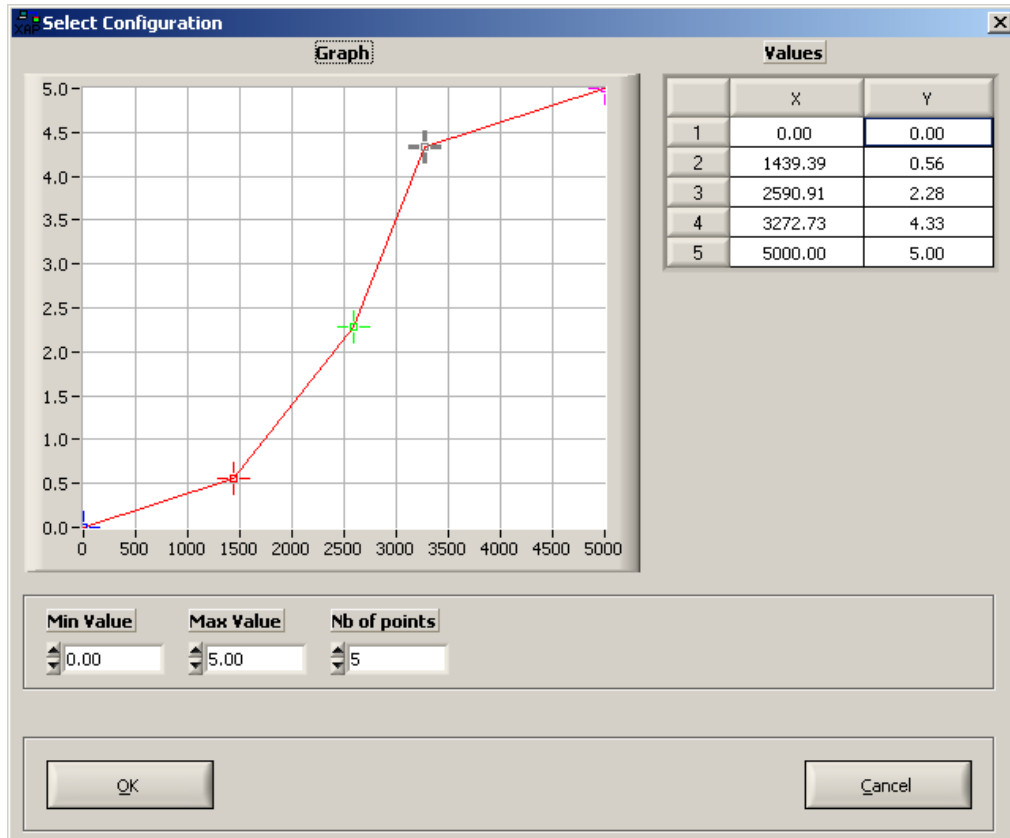
This window is brought up automatically when you add a channel to the current configuration.

If the sensor is linear, enter A et B as the final value = $A * (\text{recorded value}) + B$.
If not, uncheck the box to access the Linear parts definition interface (see below).

The Definition ring can have 3 values :

- Direct : the A and B values are used for computing the final data
- Zero : The A value is used, and the B value is automatically computed with the “Zero” defined with the E-Logger setup
- Min/Max : the A and B values are computed with the values given with the E-Logger setup and the Range value. You can also “center” these values with checking the “Centered” box.

The Type ring allows to index the channels as “Normal” or “Susps” (Suspensions) channels in E-Race. The “Dist” type is reserved to numerical distance sensors (and should not be used with the Seat E-logger).



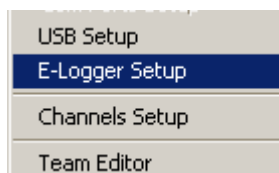
First choose a Minimum and Maximum value. Then choose the number of points of the curve. You have now to set the points on the graph, to suit the response of the sensor.

Click OK when you've finished.

When all the sensors are configured, you can save this configuration in a file. Click the Save button.

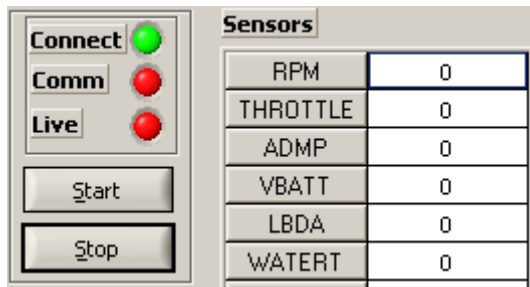
To upload the configuration in the logger, switch it on and click on the Upload button. This will take a certain time.

E-Logger Setup



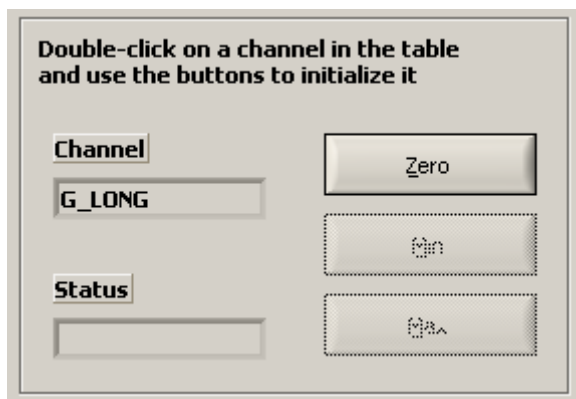
This tool shows the real-time state of every sensor plugged to the logger. It also allows to set parameters like the wheel perimeter, the minimum log speed and the number of teeth of the speed target. Finally, you use it for making the “zero” of the analog sensors.

You will have to click start to initialize the channel table.

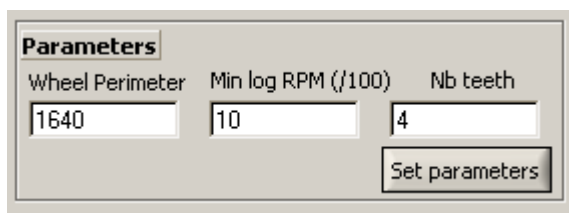


Click on the “Start” button to enter the real-time mode. The three leds will turn green if everything is OK. To exit this mode, click on the “Stop” button. If there is a connection problem, the real-time mode will stop after a timeout of 5 seconds.

The first column of the table indicate the raw value of the sensor (in mV for the analog sensors). The second column is the computed value according to the settings of each sensor.



To make the “Zero” of a sensor, you have to double click on the corresponding table row. The name of the sensor appears in the “Channel” textbox, and the action you can make on it (Zero or Min/Max). Clicking the button on the right applies the configuration with the current state of the sensor. The “Status” textbox indicates the 0-5V value that will be considered as Zero or Min/Max.



To set the parameters, enter the values in the textboxes, and click on “Set Parameters”. The status bar will indicate the result of the operation.

The SODEMO logger has a specific *Send Request* toggle, that allow the logger to send the CAN request (or not) to the Magneti-Marelli system.

7. Errors

Incorrect Pincode for serial #XXX

Check if the XXX is the serial number of your device. If not, it can indicate a transmission error. Check the cable and try connecting again. If the serial number is always the same but a wrong one, contact us.

If the serial number is correct, check if the pincode has been entered right, and if the driver kit checkbox has been checked (if needed).

Transfer initialization failed

The first phase of the communication between the PC and the logger has failed. It happens sometimes with the USB connection. Try again.

With a serial connection, check the serial cable.

No Data in logger

No data found on data logging system. On a FR1600, where the recording of data is activated by the speed of the car, it may mean that the wheel sensors are out disconnected or out of order.

Channel transfer Error

The transfer of data has failed. This happens when the logger is disconnected during download.

No entry found for serial #XXX

You have to create an entry in the *team.ini* file for your logger. Use the Tools\Team Editor item.