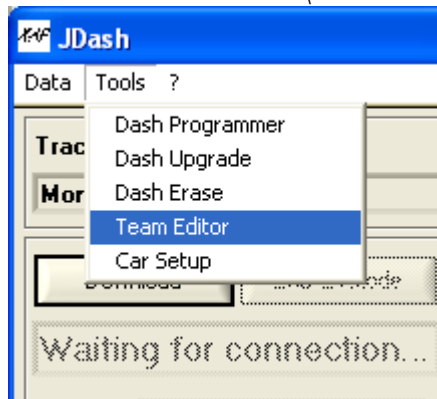


JDASH Quick Reference Guide

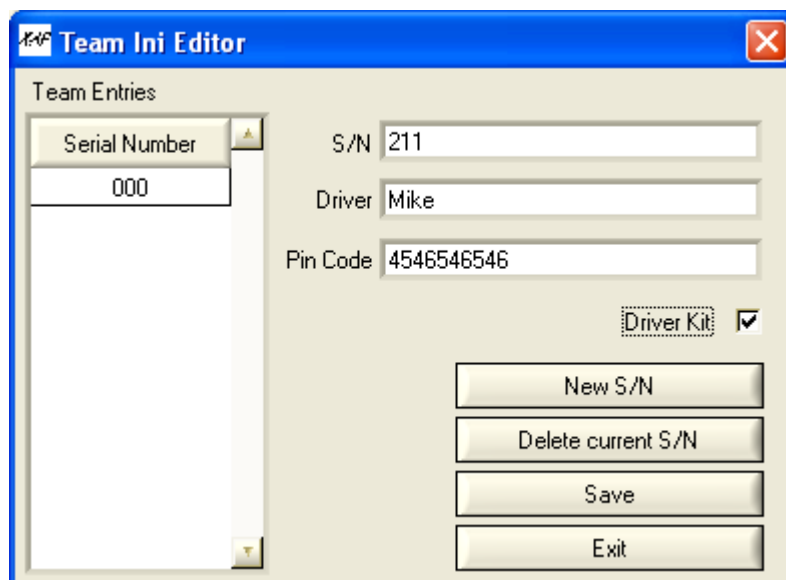
Download data from your XAP JDash in 4 steps.

1. Configure your team

Click on the menu Tools\Team Editor.



Now you have to enter the serial number of each of your dashboards, the name of their drivers, and the pincode associated with the serial number (given by XAP). If for a dashboard you got the **'Driver kit'** option, you have to click the corresponding checkbox.



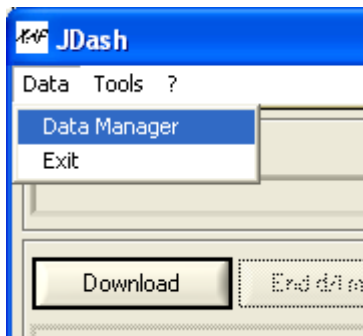
To enter more Serial Number, click on **New S/N**.

If you want to modify an entry, double-click in the table **Team Entries** on the left on the number you want to set, then click on **Save**.

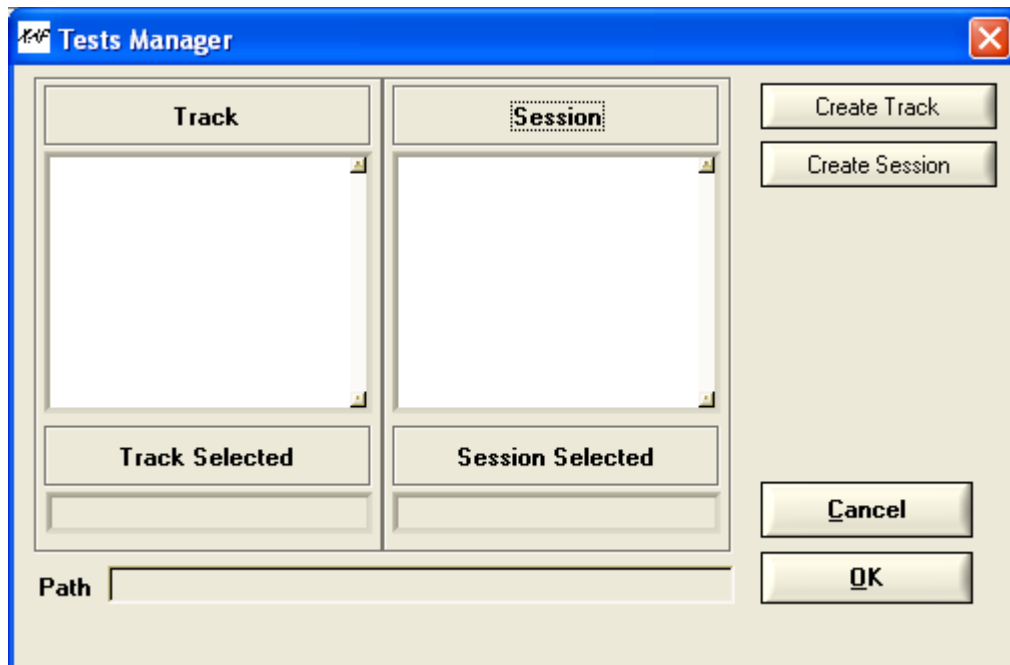
When you're done, click on **Exit**.

2. Set the path for your data

Click now on Data\Data Manager to raise up the window that will let you choose where you want to save the data you plan to download.

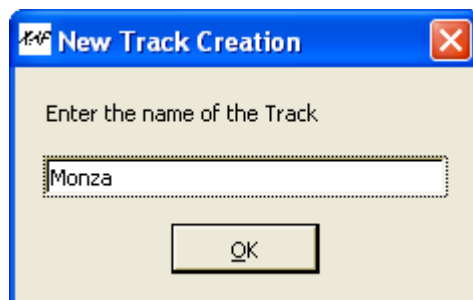


Tracks and Sessions are actually directories in the parent directory TRACKS.



The first time you use the software there will be no tracks nor sessions created.

First you have to create a track using the Create Track button :

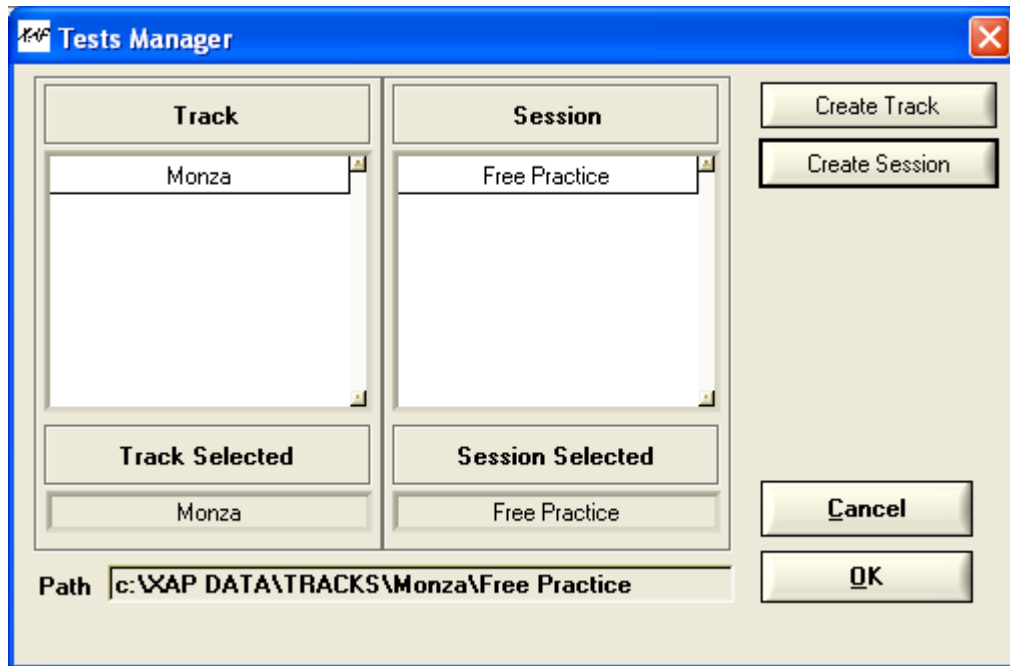


Enter the name of the current track and press Enter, or click OK.

Now create a **session** using the **Create Session** button. This **session** will become a directory under the track you just created.

You can create as many **sessions** as you want for a given track. To select a **session** for download, double-click on it in the table on the right.

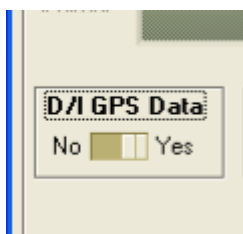
The current download **path** should now appear in the bottom of this window. If it's right, click on the **OK** button. If not, double-click on the corresponding table to choose a track and its associated session.



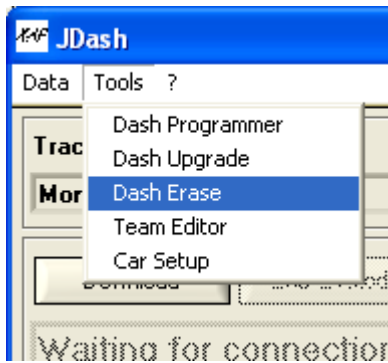
3. Choose your download options

If the car is equipped with the GPS option, you may want to download the GPS data from the dashboard.

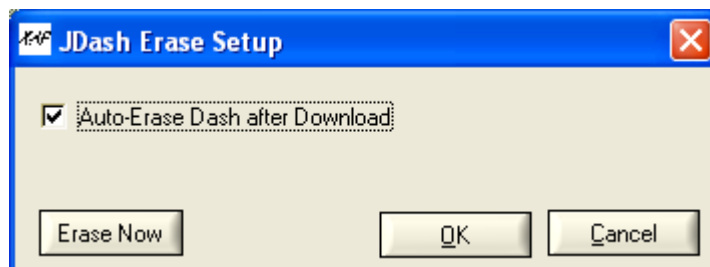
Use the **D/I GPS Data** toggle to specify this :



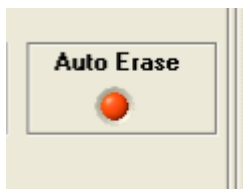
If you want all data to be erased from the dashboard after the download, click **Tools\Dash Erase** :



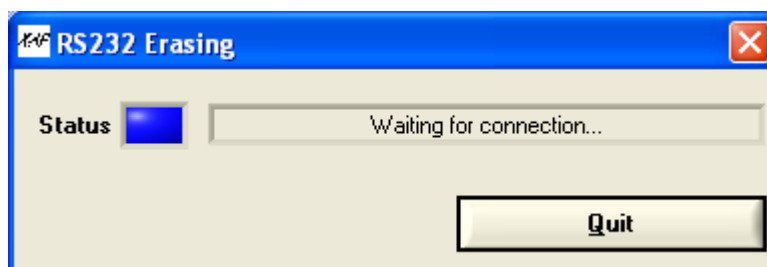
And click the checkbox **Auto-Erase after Download**, then OK.



An orange led should now appear on the download interface :



Be careful with the **Erase Now** button : it will erase all data on your dashboard. If you're sure that it's you've planned to do, click it and the erase window will appear :



When you connect the dash to the serial port, the led will turn to white, and indicate **Erase in Progress**. When finished, it indicate **Erasing Complete**. Click on **Quit** to leave this interface.

4. Download

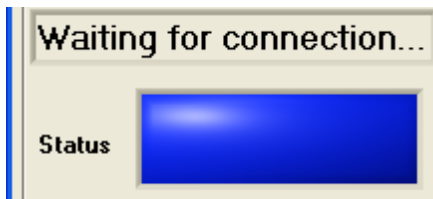
You're now ready to download.

Click the **Download** button.



The download operation will begin as soon as you will connect the dashboard the serial port of your computer.

The color of the led will indicate :



Blue : waiting for the connection

Green : everything OK during download

Orange : Communication problem on the serial port.

Red : Transfer Error.

White : Erasing data (if the **Auto-Erase** option is activated).

Blinking Blue/Green : Please disconnect the dash.

The blinking led allows you to disconnect the dashboard, when the download is over.

You can immediately connect another dash to download its data with the same parameters/options.

When you've finished, you can close the application, and begin to analyze your data with E-Race software.